



## SPEC MASTER HPC6000 SERIES

### 6.0 Purity Nickel Plated Brass Barstock Diaphragm In-Line Outlet Point

Spec Master HPC6000 series diaphragm in-line outlet points are designed for secondary pressure gas control of corrosive, toxic and high purity gases up to grade 6.0 purity (99.9999%), on gas distribution systems.

- **HPC6001 Series** | Wall Mounting In-Line Outlet Point, FKM Seal
- **HPC6002 Series** | Wall Mounting In-Line Outlet Point, EPDM Seal

### ★ FEATURES

- Isolation valve
- Non-return valve
- Encapsulated seat design
- Full range of inlet and outlet fittings
- Wall mounting

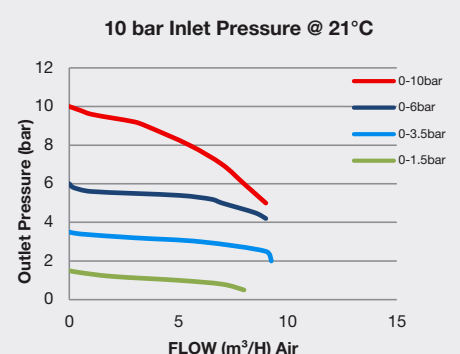
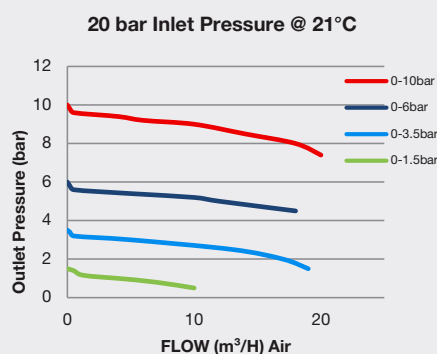
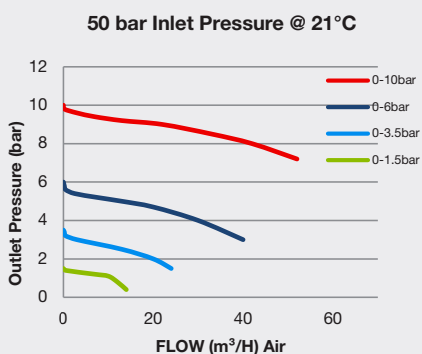
### 📄 MATERIALS

Body	Nickel Plated Brass Barstock
Bonnet	Nickel Plated Brass Barstock
Diaphragm	316L Stainless Steel
Seal	PTFE
Seat	PCTFE
Filter	10 Micron 316L Stainless Steel

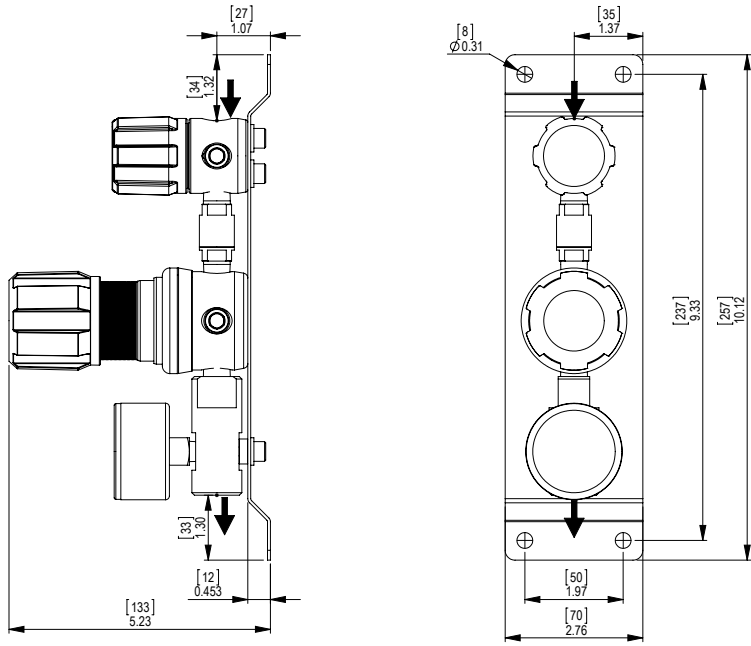
### 👍 SPECIFICATION

Maximum Inlet Pressure	207 bar (3000 PSI)
Delivery Pressure Range	1.5 bar (22 PSI) / 3.5 bar (50 PSI) / 6 bar (90 PSI) / 10 bar (150 PSI)
Gauges	50mm (2") Diameter
Ports	1/4" NPT Female
Temperature Range	-20° C to +60° C (-4° F to +140° F)
Flow Coefficient (Cv)	0.1
Helium leak Integrity	1 x 10 <sup>-9</sup> mbar l/s
Weight	2.05 kg (5.52 lbs)

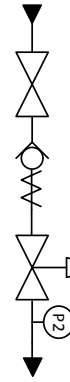
### ✓ FLOW PERFORMANCE



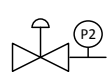


# DIMENSIONS



# PROCESS & INSTRUMENTATION



-  - Isolation Valve
-  - Non-Return Valve
-  - Adjustable Pressure Regulator with P2 Pressure Gauge

## Model No. Selector Guide

Product Type	Inlet Pressure	Outlet Pressure	Inlet Pressure Gauge	Outlet Pressure Gauge	Inlet Connection	Outlet Connection	Options
HPC6001	03 207 bar / 3000 PSI	02 -1 - 1.5 bar / 22 PSIG	00 No Gauge Fitted	00 No Gauge Fitted	000 No Inlet Fitted	00 No Outlet Fitted	A No Options Selected
HPC6002		03 -1 - 3.5 bar / 50 PSIG		01 bar/PSI	001 1/8 Stainless Steel Compression	01 1/8 Stainless Steel Compression	F Bonnet Vent Capture Kit
		04 -1 - 6 bar / 90 PSIG			002 1/4 Stainless Steel Compression	02 1/4 Stainless Steel Compression	G Helium Test Certificate
		05 -1 - 10 bar / 150 PSIG			003 6mm Stainless Steel Compression	03 6mm Stainless Steel Compression	K Certificate of Conformity
					004 1/4 NPT Male	04 1/4 NPT Male	P Calibration/ Pressure Test Certificate
					007 G3/8 BSP R/H Brass Male	07 G3/8 BSP R/H Brass Male	X Special Instruction
				008 G3/8 BSP L/H Brass Male	08 G3/8 BSP L/H Brass Male		